

**For more information  
about St. Petersburg:**

**Mayor's Action Center** .....727-893-7111  
(general city switchboard and service requests)

**TDD** .....727-892-5259  
(for the hearing impaired)

**Entertainment Hotline** .....727-892-5700

**WSPF-TV Schedule** .....727-893-7775

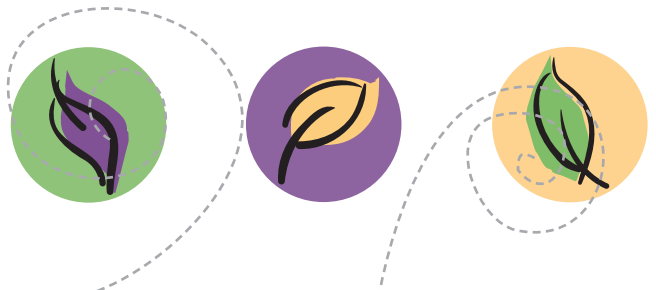
**City Web site** .....[www.stpete.org](http://www.stpete.org)

St. Petersburg's  
**Good Neighbor  
GUIDE**

**to**



**Power  
Leaf Blowers**



Leaf blowing may offer some conveniences for doing yard work, but it comes with responsibilities in being a considerate, law-abiding neighbor.

**WARNING:**

Improper use of leaf blowers may lead to pollution of our bays and waterways, neighborhood flooding caused by clogged storm drains, noise and air pollution, and a costly fine.



Did you know that city ordinance\* prohibits blowing yard clippings and other debris into the public right-of-way, onto another property, or into a city street, alley or storm drain? Debris in our streets and storm drains can cause water quality problems in our creeks, lakes and surrounding bays.

City ordinance also prohibits the use of loud leaf blowers and other power tools before 8 a.m. (9 a.m. on Sundays and holidays) and after 8 p.m everyday.



Violating these city restrictions may result in fines and costs starting at \$183 for each occurrence.

To report improper leaf blowing activity, please call **(727) 893-7111** or report it online at **[www.stpete.org/eservices](http://www.stpete.org/eservices)** and click on "**file a complaint.**"

Thanks for being a good neighbor!



\* City Code Section 16-40.060.3.1, paragraph H. and Chapter 11, Sections 11-58 and 11-65.